



DNA-PKCS (phospho Thr2638) Polyclonal Antibody

Catalog No	YP-Ab-00251
Isotype	IgG
Reactivity	Human;Mouse
Applications	IF;ELISA
Gene Name	PRKDC
Protein Name	DNA-dependent protein kinase catalytic subunit
Immunogen	The antiserum was produced against synthesized peptide derived from human DNA-PK around the phosphorylation site of Thr2638. AA range:2604-2653
Specificity	Phospho-DNA-PKCS (T2638) Polyclonal Antibody detects endogenous levels of DNA-PKCS protein only when phosphorylated at T2638.
Formulation	Liquid in PBS containing 50% glycerol, 0.5% BSA and 0.02% sodium azide.
Source	Polyclonal, Rabbit,IgG
Purification	The antibody was affinity-purified from rabbit antiserum by affinity-chromatography using epitope-specific immunogen.
Dilution	Immunofluorescence: 1/200 - 1/1000. ELISA: 1/10000. Not yet tested in other applications.
Concentration	1 mg/ml
Purity	≥90%
Storage Stability	-20°C/1 year
Synonyms	PRKDC; HYRC; HYRC1; DNA-dependent protein kinase catalytic subunit; DNA-PK catalytic subunit; DNA-PKcs; DNPk1; p460
Observed Band	
Cell Pathway	Nucleus . Nucleus, nucleolus .
Tissue Specificity	Brain,Cervix carcinoma,Epithelium,Fetal lung,Placen
Function	catalytic activity:ATP + a protein = ADP + a phosphoprotein.,enzyme regulation:Inhibited by wortmannin. Activity of the enzyme seems to be attenuated by autophosphorylation.,function:Serine/threonine-protein kinase that acts as a molecular sensor for DNA damage. Involved in DNA nonhomologous end joining (NHEJ) required for double-strand break (DSB) repair and V(D)J recombination. Must be bound to DNA to express its catalytic properties. Promotes processing of hairpin DNA structures in V(D)J recombination by activation of the hairpin endonuclease artemis (DCLRE1C). The assembly of the DNA-PK complex at DNA ends is also required for the NHEJ ligation step. Required to protect and align broken ends of DNA. May also act as a scaffold protein to aid the localization of DNA repair proteins to the site of damage. Found at the ends of chromosomes, suggesting a further role in the maintenance of



Background

This gene encodes the catalytic subunit of the DNA-dependent protein kinase (DNA-PK). It functions with the Ku70/Ku80 heterodimer protein in DNA double strand break repair and recombination. The protein encoded is a member of the PI3/PI4-kinase family.[provided by RefSeq, Jul 2010],

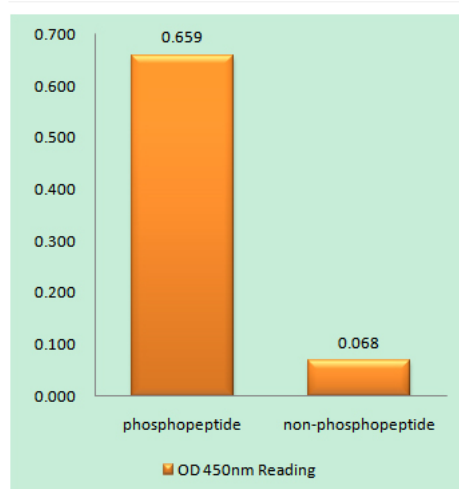
matters needing attention

Avoid repeated freezing and thawing!

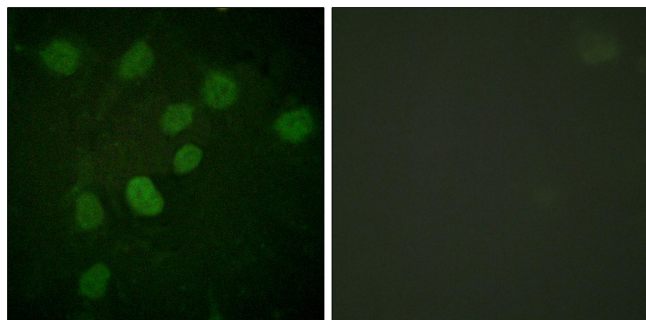
Usage suggestions

This product can be used in immunological reaction related experiments. For more information, please consult technical personnel.

Products Images



Enzyme-Linked Immunosorbent Assay (Phospho-ELISA) for Immunogen Phosphopeptide (Phospho-left) and Non-Phosphopeptide (Phospho-right), using DNA-PK (Phospho-Thr2638) Antibody



Immunofluorescence analysis of HUVEC cells treated with serum 20% 30', using DNA-PK (Phospho-Thr2638) Antibody. The picture on the right is blocked with the phospho peptide.